



# BOVALLS

*dörrbyggeri*

## Instructions for installing doors

Installing must be done professionally for any warranty obligations. It is not easy to install a door. We recommend that a professional carpenter installs the door if you're not experienced.

**NOTE: The warranty does not apply if foam is used when installing the door. If foam is used, you cannot adjust any mistakes during installation or adjust any manufacturing defects like you can with frame screws. Also, the foam can swell after appliance which can compress the doorframe.**

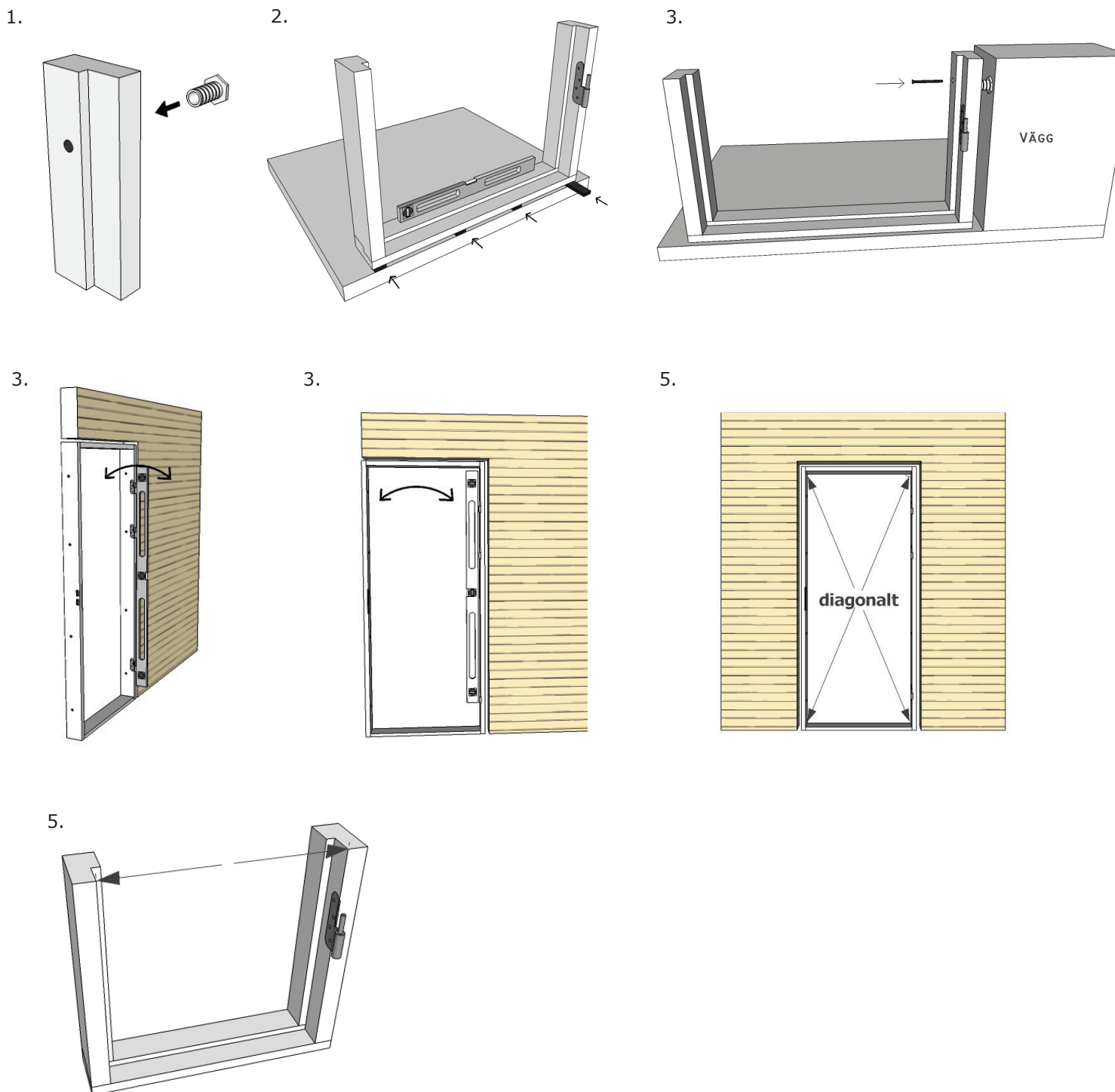
1. We recommend frame screws for both exterior and interior doors because with screws the door and frame can be adjusted after the installation. Adjustments might be necessary with wooden doors since the wood might swell or shrink depending on air humidity and temperature. All our exterior doors are delivered with pre-mounted frame-screw sockets (Adjufix).
  2. Set up the frame without attaching it. Stack thin Masonite pads until the threshold is exactly horizontal. Add a moisture barrier, it is particularly important if the frame is on a concrete slab. The threshold must be supported during the all its width. This is especially important on the hinge side since the entire weight rests there.
  3. Place the frame in the door hole and unscrew the frame screw-sockets until they reach the wall without squeezing the frame. Screw in the top and bottom screws on the hinge side first. Insert the top and bottom screw at the other side. Then hang in the door leaf and adjust and install all frame screws.
- Adjust the frame so that it stands vertically outwards / inwards and make sure the frame is exactly horizontal on the blocks below the threshold. It is very important that the frame is exactly vertical. Use a long spirit level to check this.
4. Fix the frame screws according to the manufacturer's instructions, and check that the frame does not move out of position.
  5. Make sure that the frame is vertical and check that the diagonal measurements are equal. Adjust if necessary using the frame screw-sockets. Measure the width of the frame farthest out on the inside of the frame to check that the side pieces have not turned out of angle. Check the frame to make sure that the width is the same from top to bottom.
  6. Hang the door leaf in the frame. **Make sure the door leaf strikes the strike plate side of the frame evenly at top and bottom. The door leaf should now stand still in different opening angles. If the door leaf is not still, the frame is not correctly inserted.** Loosen the frame screws and adjust the frame again. Remember that a small error now will cause irritation and problems later on. The gap between the frame and the door leaf should never exceed 3mm.
- Door leaves with solid panels are sometimes a bit warped because the panel pulls the door leaf. Place the door leaf of the hinge side and apply the frame on the strike plate side after the door leaf.
- Solid wood interior & exterior doors: Let the gap between the frame and the door be slightly bigger on the locking side of the door, since the solid wood will swell slightly as humidity in the air increases.
- 7\*. Fill the space between frame and wall with tape drives. The warranty does not apply if foam is used when installing the door. If foam is used, you cannot adjust the frame with frame screws, adjust any mistakes during installation or adjust any manufacturing defects. Also, the foam can after swell and compress the frame.
  8. If wooden linings are to be used, use weak nails. Put most of the nails in the frame and nail just a little in the wall to make sure that the lining is not pulling the frame when moving with changes in temperatures.
  - 9 \*. If a side light is to be installed with the door, join doorframe and side light first before installing it in the building. Use screws and latex sealant or glue in the assembly.
  10. The hinges need to be height adjusted after assembly. Adjust the hinges with the Allen/Torx screw at the bottom of the hinge, until the gap from the top of the door leaf to the frame is approximately 2mm.

11. Closing pressure, is how hard the door leaf is pressed against the frame, must be adjusted when the door is installed. This is adjusted by inserting a screwdriver and bend up the bottom metal lip, opposite the plunger handle of the strike plate. The door must be easy to open, yet dense. If the metal lip is bent up too hard it will be difficult to press down the handle.

12 \*. Fit the cylinder and handle directly, so that no water gets into these openings.

13. Remember that adjustments may be needed afterwards because the door is made of a living material and the materials in the house can move a little.

\* Not for interior doors.





# BOVALLS

*dörrbyggeri*

## Bufab – Security strike plate

### NOTE!

For all standard single front doors except Yale: read and follow both “Installation” and “adjustment”.

### NOTE!

For all double doors, doors with sidelights etc. with this strike plate: read and follow only the instruction “adjustment”.



### Installation:

- First, install the door frame according to the installation instructions provided with the door delivery. Use a 10mm Allen key or a T-wrench for frame screws to unscrew the sleeves (1). Screw until they hit a solid wooden stud or equivalent anchoring material. Do not overtighten the sleeves, as this can cause the frame to warp.
- Anchor the strike plate by screwing into the wooden stud with a 6mm **frame screw**.
- The recommended gap between stud and frame is up to 20mm

### Adjustment:

If you find that the door leaf does not pull tightly enough against the frame, you can adjust the "cover" (3) in the strike plate.

- Loosen the adjustment screws (2). Do not loosen them more than necessary to move the cover; otherwise, the screw plate on the back may come loose.
- Move the cover inward.
- Tighten the screws again and test the door.